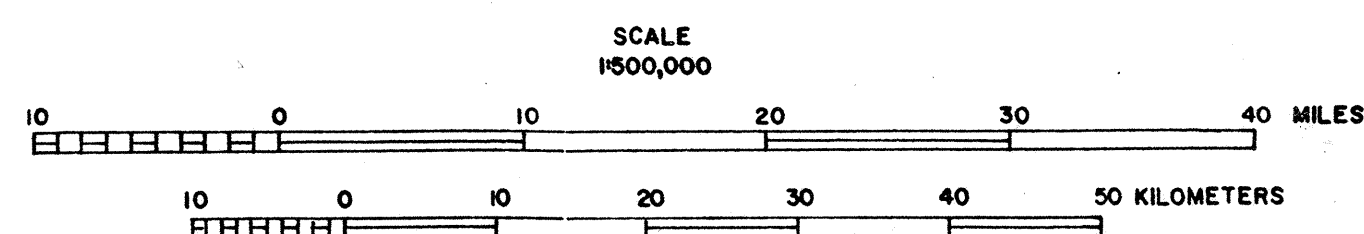
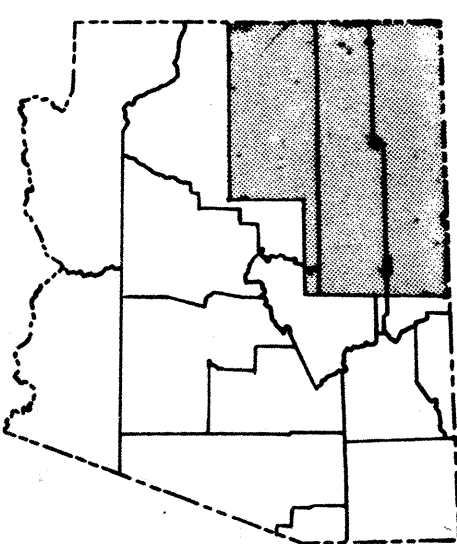
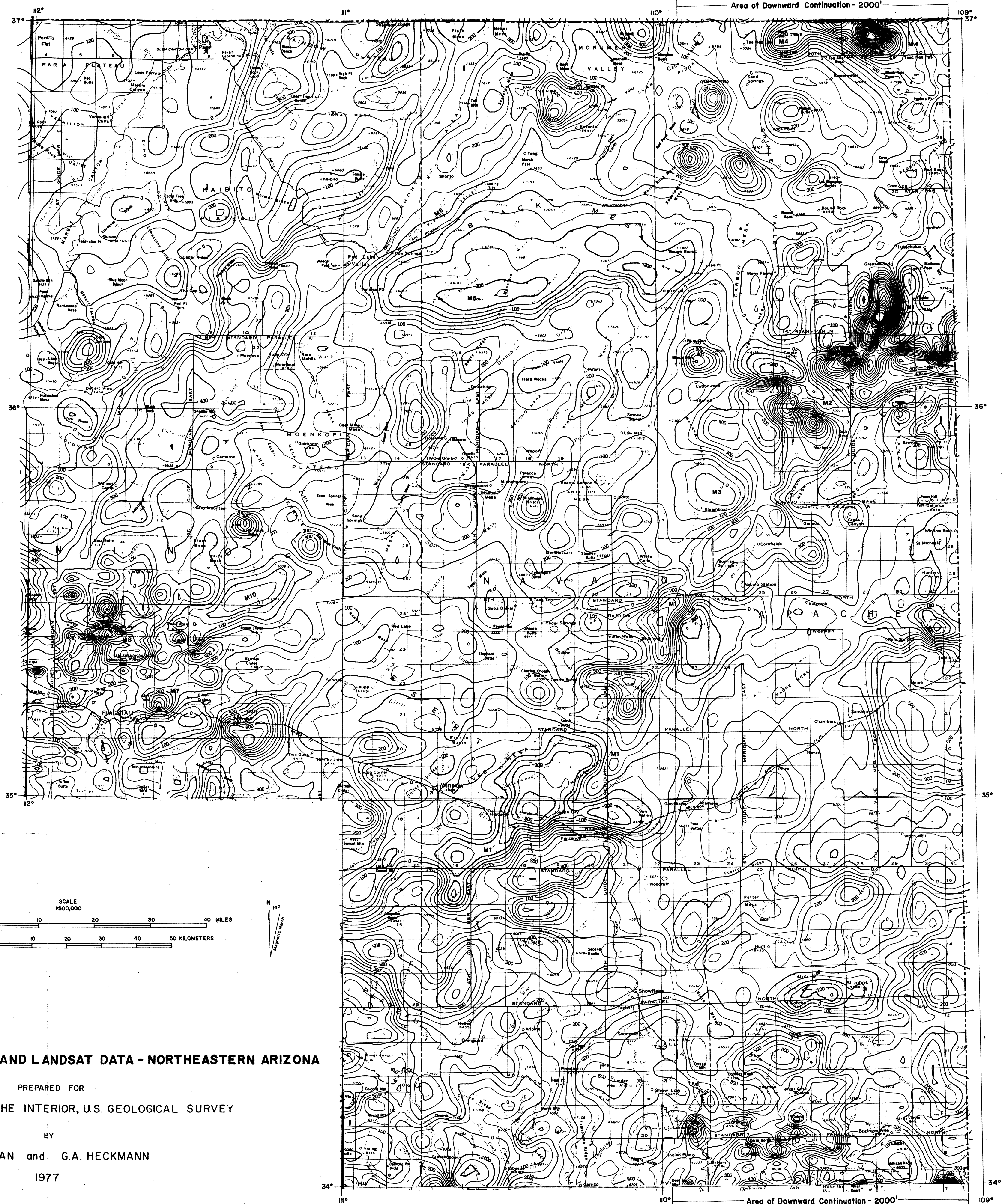


EXPLANATION

Isogamma Contour - Line of Equal Magnetic Intensity
Contour Interval = 50 gamma

M7 Feature Discussed in Text



AN INTEGRATION OF GEOPHYSICAL AND LANDSAT DATA - NORTHEASTERN ARIZONA

PREPARED FOR
THE DEPARTMENT OF THE INTERIOR, U.S. GEOLOGICAL SURVEY

BY
S.I. GUTMAN and G.A. HECKMANN
1977

Residual Magnetic Intensity Map

PLATE 5

06-22 5 of 7